

# GRASSLANDS

The Publication of the California Native Grass Association

Volume VI, No. 2 June 1996

## GRASSLANDS NOTES AND OBSERVATIONS

### HONORING THE ELDERS

The People that Gave the California Native Grasses their Names.

By Craig C. Dremann, The Reveg Edge, P.O. Box 609, Redwood City, Calif. 94064 (415) 325-7333

#### ABSTRACT

The taxonomic history of the California native grasses is reviewed, with history of the researchers emphasized. The review is drawn from an Internet site entitled 'International Working Group on Taxonomic Databases for Plant Sciences'.

When you look up a native grass in the *Jepson Manual*, the last name of the author of the scientific or botanic name appears next to each species or variety. When you examine *Elymus glaucus* Buckley, you find that only one author, Samuel Botsford Buckley who lived from 1804 to 1884, gave Blue Wild Rye its scientific name. Other species have been worked and reworked, like *Nassella cernua* (Stebb. & Löve) Barkworth, and in these cases all the authors are listed.

All of the researchers who gave the California native grasses their scientific names are arranged alphabetically below. The number shown in parentheses ( ) is the total number of grass species and varieties that each author has named. The author's full name, date of birth and death are given, and if still alive an "x" is shown.

When you look over this list, it is amazing to think that it took 126 researchers laboring over a span of 250 years to describe and give names to the 300 or so beautiful native grasses of California!

The second section of this paper organizes the authors by generation, according to their birth years. The third section lists the top ten authors by number of grasses named. All information for this paper originated on the internet from the International Working Group on Taxonomic Databases for Plant Sciences at:

<http://www.herbaria.harvard.edu:80/data/author/search.html>

Author	Sp.	Full Name	Life span	Home
Allred, K. W. ....	(3)	Kelly W. Allred .....	(1949-x)	New Mexico, USA
Arn .....	(2)	George Arnold Walker Arnott.....	(1799-1868)	Scotland
Atkins, R. J. ....	(1)	Randy J. Atkins .....	(?)	USA
Barkworth .....	(29)	Mary Elizabeth Barkworth .....	(1941-x)	Utah USA
Batch .....	(1)	Frederick William Batchelder .....	(1838-1911)	
Beal.....	(4)	William James Beal.....	(1833-1924)	Michigan, USA
Beauv. ....	(6)	Amboise Marie François Joseph Palisot de Beauvois(1755-1820)		France
Beetle .....	(1)	Alan Ackerman Beetle .....	(1913-x)	Wyoming, USA
Benson, L. ....	(1)	Lyman David Benson.....	(1909-1993)	USA

### *In This Issue:*

HONORING THE ELDERS.....	p 1-4
Announcements.....	p 5
Annual Meeting Agenda.....	p 6
President's Address.....	p 7



Benth ..... (5)	George Bentham ..... (1800-1884)	England
Bolander ..... (9)	Henry N. Bolander ..... (1831-1897)	Cal., USA
Bothmer, V. .... (1)	Roland von Bothmer ..... (1943-x)	
Britton ..... (2)	Nathaniel Lord Britton ..... (1859-1934)	NY, USA
Buckley ..... (8)	Samuel Botsford Buckley ..... (1809-1884)	USA
Burt-Davy ..... (4)	Joseph Burt-Davy ..... (1870-1940)	Eng., So. Afr., USA
Campbell, C.S. .... (1)	Christopher S. Campbell ..... (1946-x)	Maine, USA
Cassidy ..... (1)	James Cassidy ..... ((1847-1889)	
Cav ..... (1)	Antonio Jose Cavanilles ..... (1745-1804)	Spain
Chase ..... (1)	Mary Agnes Chase ..... (1869-1963)	USA
Church ..... (1)	Margaret Brooks Church ..... (1884-1949?)	USA
Covas ..... (2)	Guillermo Covas ..... (1915-x)	Argentina
Crampton ..... (1)	Beecher Crampton ..... (1918-x)	Davis, Cal., USA
Davis, J.I. .... (2)	Jerry I. Davis ..... (1952-x)	USA
DC. .... (1)	Augustin Pyramus DeCandolle ..... (1778-1841)	
Decker ..... (1)	Paul Decker ..... (1867-?)	
Dewey, D.R. .... (2)	Douglas R. Dewey ..... (1929-x)	
Elmer ..... (1)	Adolph Daniel Edward Elmer ..... (1870-1942)	
Engelm ..... (1)	George Engelmann ..... (1809-1884)	Missouri, USA
Fern ..... (4)	Merritt Lyndon Fernald ..... (1873-1950)	Cambridge, Mass.
Fourn., E. .... (2)	Eugene Pierre Nicolas Fournier ..... (1834-1884)	
Frederiksen, S. .... (2)	S. Frederiksen ..... (1942-x)	Denmark
Geyer ..... (1)	Carl Andreas Geyer ..... (1809-1853)	USA
Goeppert ..... (1)	Johann Heinrich Robert Goeppert (Goppert) ..... (1800-1884)	Germany
Goodd, C.O. .... (1)	Charlotte Olive Goodding (née) ..... (1916-x)	Ariz., married to Reeder
Gould ..... (11)	Frank Walton Gould ..... (1913-1981)	USA
Gray, A. .... (4)	Asa Gray ..... (1810-1888)	Massachusetts, USA
Greene, C.W. .... (1)	Craig W. Greene ..... (1949-x)	USA
Greene, E. .... (1)	Edward Lee Greene ..... (1843-1915)	
Griffiths ..... (1)	David Griffiths ..... (1867-1935)	
Griseb ..... (3)	Heinrich Rudolph August Grisebach ..... (1814-1879)	Germany
Hackel ..... (2)	Eduard Hackel ..... (1850-1916)	Spain, Port., Austria
Henrard ..... (2)	Johannes (Jan) Theodoor Henrard ..... (1881-1974)	
Herter ..... (1)	Wilhelm (Guillermo) Gustav(o) Franz Francis(co))Herter (1884-1958)	
Hitch, A. .... (27)	Albert Spear Hitchcock ..... (1865-1935)	
Hitch, C. .... (1)	Charles H. Hitchcock ..... (1902-1986)	
Hook ..... (6)	William Jackson Hooker ..... (1785-1865)	England
Hoover ..... (3)	Robert Francis Hoover ..... (1913-1970)	
Hornem ..... (1)	Jens Wilken Hornemann ..... (1770-1841)	Denmark
Howard, J. .... (1)	John Eliot Howard ..... (1807-1883)	
Howell, J. .... (2)	John Thomas Howell ..... (1903-1994)	Cal., USA
Jacobsen, N. .... (1)	Niels Henrik Gunther Jacobsen ..... (1941-x)	
Johnson, B. .... (1)	Bertil Lennart Johnson ..... (1909-x?)	
Jones, M.E. .... (4)	Marcus Eugene Jones ..... (1852-1934)	
Kearney ..... (1)	Thomas Henry Kearney ..... (1874-1956)	
Koch ..... (1)	Wilhelm Daniel Joseph Koch ..... (1771-1849)	Germany
Koeler ..... (1)	Georg Ludwig Koeler ..... (1765-1807)	
Kunth ..... (6)	Karl Sigismund Kunth ..... (1788-1850)	Germany
L. .... (18)	Carolus Linnaeus (Carl von Linné) ..... (1707-1778)	<b>Father of botany</b>
Lagasca ..... (2)	Mariano Lagasca y Segura ..... (1776-1839)	
Lam. .... (5)	Jean Baptiste Antoine Pierre Monnet Lamarch .... (1744-1829)	France
Lawr., W.E. .... (1)	William Evans Lawrence ..... (1883-1950)	
Ledeb ..... (1)	Karl Friedrich von Ledebour ..... (1785-1851)	Russia
Link ..... (3)	Heinrich Friedrich Link ..... (1767-1851)	Germany
Lonard ..... (3)	Robert I. Lonard ..... (1942-x)	Edinburg, Tex. USA
Löve, A. .... (5)	Askell Löve ..... (1916-1994)	Cal., USA
Love, R. M. .... (1)	Robert Merton Love ..... (1909-1995)	Davis, Cal. USA
Macoun ..... (1)	John Macoun ..... (1831-1920)	Ireland, Canada
Merr ..... (3)	Elmer Drew Merr ..... (1776-1856)	



Meyen ..... (1)	Franz Julius Ferninand Meyen ..... (1804-1840)	Germany
Michaux ..... (5)	André Michaux ..... (1746-1802)	France
Nash, ..... (8)	George Valentine Nash ..... (1864-1921)	
Nelson, J.C. .... (1)	James Carlton Nelson ..... (1867-1944)	
Ness ..... (5)	Christian Gottfried Nees von Esenbeck ..... (1776-1858)	Prussia
Nevski ..... (2)	Sergei Arsenjevic Nevski ..... (1908-1938)	
Nutt ..... (6)	Thomas Nuttall ..... (1786-1859)	Massachusetts, USA
Nygren ..... (1)	Axel Nygren ..... (1912-x)	
Pavlick, L.E. .... (1)	Leon E. Pavick ..... (?)	Canada
Philippi ..... (1)	Rudolph Amandus Philippi ..... (1808-1904)	Chile
Pilger ..... (3)	Robert Knud Friedrich Pilger ..... (1876-1953)	
Piper ..... (6)	Charles Vancouver Piper ..... (1867-1926)	
Pogg ..... (2)	Justus Poggenburg ..... (1840-1893)	
Presl, C. .... (8)	Carel Borowag Presl ..... (1794-1852)	
Presl, J.S. .... (2)	Jan Swatopluk Presl ..... (1791-1849)	
Pursh ..... (1)	Frederick T. Pursh ..... (1774-1820)	Germany
R.Br. .... (1)	Robert Brown ..... (1773-1858)	United Kingdom
Raf ..... (1)	Constantine Samuel Rafinesque-Schmaltz ..... (1783-1840)	
Reeder ..... (4)	John Raymond Reeder ..... (1914-x)	Tucson, AZ
Richter ..... (1)	August Gottlieb Richter ..... (1742-1812)	
Roemer ..... (2)	Johann Jacob Roemer ..... (1763-1819)	
Rupr. .... (3)	Franz Josef Ivanovich Ruprecht ..... (1814-1870)	
Rydb ..... (8)	Per Axel Rydberg ..... (1860-1931)	New York USA
Sánchez M ..... (1)	Emiliano Sanchez Martinez ..... (?)	Mexico
Scheele ..... (1)	George Heinrich Adolf Scheele ..... (1808-1864)	
Schultes ..... (6)	Joseph August Schultes ..... (1773-1831)	Germany
Schultes f. .... (1)	Julius Hermann Schultes ..... (1804-1840)	son of Joseph
Scribner ..... (27)	Frank Lamson Scribner ..... (1851-1938)	
Seberg, O. .... (1)	Ole Seberg ..... (1952-x)	
Shear ..... (5)	Cornelius Lott Shear ..... (1865-1956)	
Shinn ..... (1)	Lloyd Herbert Shinners ..... (1918-1971)	
Shultes, J.A. .... (1)	J. A. Schultes ..... (?)	
Smith, J.G. .... (5)	Jared Gage Smith ..... (1866-1925)	
Sobol ..... (1)	Gregorius Fedorovitch Sobolewski ..... (1741-1807)	
Söderstrom ..... (1)	Thomas Robert Söderstrom ..... (1936-1987)	USA
Soreng, R. .... (6)	Robert J. Soreng ..... (?)	USA
St.-Yves ..... (1)	Alfred St.-Yves ..... (1855-1933)	
Stebb ..... (3)	George Ledyard Stebbins ..... (1906-x)	Davis, Cal., USA
Steudel ..... (8)	Ernst Gottlieb Steudel ..... (1783-1856)	Germany
Suksd ..... (1)	Wilhelm Nikolaus Suksdorf ..... (1850-1932)	USA
Swallen ..... (8)	Jason Richard Swallen ..... (1903- 1991)	USA
Swezey ..... (1)	Goodwin Delose Swezey ..... (1851-1934)	USA
Tateoka ..... (1)	Tsuguo Tateoka ..... (1931-x)	
Thurber ..... (11)	George Thurber ..... (1821-1890)	
Timm ..... (1)	Joachim Christian Timm ..... (1734-1805)	Germany
Torrey ..... (8)	John Torrey ..... (1796-1873)	New York
Trent, J.S. .... (1)	J. S. Trent ..... (?)	
Trin ..... (19)	Carl Bernhard von Trinius ..... (1778-1844)	
Tweedy ..... (1)	Frank Tweedy ..... (1854-1937)	USA
Vahl, M. .... (1)	Martin Vahl ..... (1749-1804)	Denmark
Vasey ..... (43)	George Vasey ..... (1822-1893)	
Wahlenb ..... (1)	Georg Wahlenberg ..... (1781-1851)	Sweden
Walter ..... (3)	Thomas Walter ..... (1740-1788)	South Carolina. USA
Watson, S. .... (3)	Sereno Watson ..... (1826-1892)	Massachusetts, USA
Weath ..... (1)	Charles Alfred Weatherby ..... (1875-1949)	
Weber, W.A. .... (2)	William Alfred Weber ..... (1918-x)	Boulder, Colo.
Willd ..... (2)	Karl Ludwig Willdenow ..... (1765-1812)	Germany
Williams ..... (1)	Samuel Williams ..... (1743-1817)	



**AUTHORS OF CAL. NATIVE GRASSES LISTED BY GENERATION (date of birth):**

The number in parentheses ( ) indicates the number of species or varieties that each generation named. A check mark (✓) after the author's name indicates that the author is living.

Generation not known: Atkins, Pavick, Sánchez, Shultes, Soreng, Trent (11)

1700-1720: Linnaeus (18)

1721-1740: Timm, Walter (4)

1741-1760: Beauvois, Cavanilles, Lamarch, Michaux, Richter, Sobolewski, Vahl, Williams (21)

1761-1780: Brown, DeCandolle, Hornemann, Koch, Koeler, Lagasca y Segura, Link, Merr,  
Ness von Esenbeck, Pursh, Roemer, Schultes, Trinius, Willenow (48)

1781-1800: Arnott, Hooker, Kunth, Ledebour, Nuttall, Presl (Carel), Presl (Jan), Rafinesque-Schmaltz, Steudel, Torrey,  
Wahlenberg (49)

1801-1820: Bentham, Buckley, Engelmann, Geyer, Goeppert, Gray, Grisebach, Howard, Meyen, Phillippi, Ruprecht,  
Scheele, Schultes (Julius) (31)

1821-1840: Batchelder, Beal, Bolander, Fournier, Macoun, Poggenburg, Thurber, Vasey, Watson (76)

1841-1860: Britton, Cassidy, Greene, Hackel, Jones, Rydberg, Scribner, St.-Yves, Suksdorf, Swezey, Tweedy (49)

1861-1880: Burt-Davy, Chase, Decker, Elmer, Fernald, Griffiths, Hitchcock (Albert), Kearney, Nash, Nelson, Pilger,  
Piper, Shear, Smith, Weatherby (69)

1881-1900: Church, Henrard, Herter, Lawrence (11)

1901-1920: Beetle ✓, Benson, Covas ✓, Crampton ✓, Goodd ✓, Gould, Hitchcock (Charles), Hoover, Howell, Johnson ✓,  
Löve (Askell), Love (R. Merton), Nevski, Nygren ✓, Reeder ✓, Shinn, Stebbins ✓, Swallen, Weber ✓ (51)

1921-1940: Dewey ✓, Söderstrom, Tateoka ✓ (4)

1941-1960: Allred ✓, Barkworth ✓, Bothmer ✓, Campbell ✓, Davis ✓, Frederiksen ✓, Greene ✓, Jacobsen ✓, Lonard ✓, Seberg  
✓ (44)

**TOP TEN AUTHORS OF CALIF. NATIVE GRASSES BY NUMBER OF SPECIES NAMED:**

1.) Vasey	(43)	George Vasey .....	(1822-1893)	
2.) Barkworth	(29)	Mary E. Barkworth .....	(1941-x)	Utah, USA
3.) Scribner	(27)	Frank Lamson Scribner .....	(1851-1938)	
4.) Hitch, A.	(27)	Albert Spear Hitchcock .....	(1865-1935)	
5.) Trin	(19)	Carl Bernhard von Trinius .....	(1778-1844)	
6.) L.	(18)	Carolus Linnaeus (Carl von Linné).....	(1707-1778)	<b>Father of botany</b>
7.) Thurber	(11)	George Thurber .....	(1821-1890)	
8.) Gould	(11)	Frank Walton Gould .....	(1913-1981)	USA
9.) Bolander	(9)	Henry N. Bolander .....	(1831-1897)	Cal., USA
10.) Steudel	(8)	Ernst Gottlieb Steudel .....	(1783-1856)	Germany

Friends of the Herbarium  
Biological Sciences Herbarium,  
California State University, Chico  
Chico, CA 95929-0515

Introduction to Keying Comps (Composites):  
14 September, John Dittes (916)  
Introduction to Keying Grasses: 5 October, Tom  
Griggs (916) 829-0947  
Introductory Cladistics: 26 October, Richard Lis (916)  
225-2142  
Introduction to Keying Carex: 7 December,  
Lawrence Janeway (916) 899-7434 or by email  
75331.2654@compuserve.com

- Growers of premium quality native plants and grasses for wildland restoration, landscapes, and agriculture.
- Let our quality plants help your project be successful!
- Grown in containers that promote vigorous root systems that greatly improve survivability at out-planting.

**Cornflower Farms**  
p.o. box 896 ✉ elk grove, ca 95759  
(916) 689-1015 ✉ fax (916) 689-1968  
*Call or write for more information*





**Abstracting Grasslands**

Craig Dremann has been working some of his behind-the-scenes magic to get CNGA and *Grasslands* wider exposure. Craig has worked for about a year to get local university libraries to 'carry' *Grasslands* with some success. UCLA Main Library is the latest to show interest, however, *Grasslands* has had to undergo growth to gain the stature necessary to be considered a publication of interest to these major libraries. As some of our readers may have noticed, *Grasslands* has not been officially called a 'newsletter' for some time. We are a 'Publication'. We now present articles in two formats, peer-reviewed **Research Reports** and nonrefereed **Observations**. In so doing we attempt to continue to reach a wide range of readership—but to be considered for major libraries and for publications (hardcopy and online), we will now take an additional step as follows:

Format for reviewed articles must follow the outline below: **Title, Names of Author(s), Abstract, Introduction** (stating clearly and concisely why research was conducted), **Methods and Materials, Results, Discussion or Conclusions, Pertinent Literature or Literature Cited**. For the full format description, refer to Volume 6, Number 1, 1996, and all subsequent first issues of the calendar year. An abstract should also be included with any non-reviewed article, and may be brief, such as that appearing in the article in this issue. If the author of a non-reviewed article does not include an abstract, one may be written by the editor if time does not permit the article to be sent back to the author. Note that the abstract is a new requirement so that abstracted publications such as Biosis and Biological Abstracts may be convinced to carry *Grasslands*. This will enable us to be searched as part of a normal literature search for anyone worldwide who is interested in perennial grasses, habitat restoration, etc.

**CNGA HAS MOVED!**

The CNGA Board has approved new efficiency-promoting, cost-cutting measures. We have changed our address to a Davis post office box to be more central to the majority of CNGA active volunteers, effective immediately. We will no longer have a regular secretary to take calls, and our efficiency measures include more duties previously performed by secretarial support to be undertaken by volunteers. Our board members and committee chairs, as well as event organizers are available by phone. We have made a change in printers that is already saving us funds. There have been a few bugs that have resulted in editing publishing operations, but we believe these are largely resolved.

While these changes have been abrupt, the need for making them has been evident for some time. First and foremost, our number one priority is still to inform and educate the public, and to develop, promote, and restore our native California grasses.

Please direct any questions, concerns, or comments to Letters to the Editor.

This year the California Native Grass Association will hold a special "Honoring the Elders" Section at our Annual Meeting to be held on Friday, November 8, 1996, at the Holiday Inn Resort Hotel in Monterey, California. Those in attendance at the meeting will have the opportunity to hear-from and visit-with Drs. Alan A. Beetle, Beecher Crampton, and G. Ledyard Stebbins, three of the pioneers in the fields of native grass ecology, taxonomy, distribution, evolution, and more. They have consented to join us at the meeting, and to speak on a topic of their choice. Much of what we know today about California native grasses is a direct result of research and publication that these men conducted beginning in the 1930's, and which continues today. The California Native Grass Association chooses to recognize their tireless efforts over the years by honoring them at the meeting. We urge all of our members and the public at large to join us on the beautiful Monterey Coast so as not to miss this opportunity to meet these men. The opportunity to do so may not come again.

**CALIFORNIA EXOTIC PEST PLANT SYMPOSIUM '96**

October 4 - 6, 1996

Handlery Hotel, San Diego, California

The California Exotic Pest Plant Council (CalEPPC) will hold **CalEPPC Symposium '96** in San Diego October 4 - 6, 1996. The symposium deals with the threat to California's natural ecosystems by invasive non-native plant species introduced from other areas of the world. For more information contact Sally Davis, P.O. Box 15575, Sacramento, CA 95852-0575. (916) 921.5911. email: sallydavis@aol.com.

***The Future of Arid Grasslands: Identifying Issues, Finding Solutions.*****October 9-13, 1996 in Tucson Arizona**

A Conference for everyone interested in the future of grasslands in the American Southwest and Northern Mexico. A solution-oriented conference focusing on practical tools for grassland management, preservation and restoration. For more information, contact Grasslands Conference, c/o Tucson Audubon Society, 300 E. University, #128, Tucson AZ 85705, or call the University of Arizona Water Resources Center at (520) 792-9591 or FAX (520) 792-8518.

**CHANGES TO MEMBERSHIP PAYMENT**

CNGA memberships are no longer on a calendar year basis. Please note on your mailing label that your "paid through" date is now shown and that you must renew by that date to receive the subsequent *Grasslands* issue.

volume 6, number 2



California Native Grass Association  
 Annual General Membership Meeting  
 Friday, November 8, 1996  
 Holiday Inn Resort Hotel, Monterey

Tentative Agenda

Morning

- 7:30 - 8:15 Check in
- 8:15 - 8:30 Welcome: Dr. Mark R. Stromberg, President
- Session I - Weed Control and Limits to Success in the Restoration of Native Grass Stands**
- 8:30 - 8:55 Why Native Grass Planting Projects Fail  
 Dr. Glen Holstein, Zentner and Zentner
- 8:55 - 9:20 Weed Control Using Herbicides  
 Rachel Long, UC Cooperative Extension Service
- 9:20 - 9:45 Weed Control in the Urban/Grassland Interface  
 Tony Norris, Licensed Pest Control Advisor, Landscape Inspector
- 9:45 - 10:10 Weed Control Strategies for Establishing Native Grasses  
 John Anderson, Hedgerow Farms

10:10 - 10:40 Break

**Session II - Honoring the Elders**

The California Native Grass Association chooses to recognize the following individuals whose pioneering and very important work with California grasses laid the groundwork for our current understanding of the distribution, ecology, and taxonomy of California native grasses.

- 10:45 - 11:15 Rescue Grass and its Relatives  
 Dr. Alan A. Beetle, Professor Emeritus, University of Wyoming, Laramie
- 11:20 - 11:50 Adventures in Grass Collecting  
 Dr. Beecher Crampton, Professor Emeritus, University of California, Davis
- 11:55 - 12:25 The Grasses of California: Past, Present, and Future  
 Dr. G. Ledyard Stebbins, Professor Emeritus, University of California, Davis
- 12:30 - 1:30 Lunch and Business Meeting

volume 6, number 2

Grasslands

Afternoon

**Session III - Genetic Ecotypes and their Importance in Native Grass Restoration Efforts**

- 1:30 - 1:40 Introduction
- 1:40 - 2:05 Selecting Gene Pools: Site Specificity versus Regional Specificity--An Argument for a Regional Approach  
 Scott Stewart, ConservaSeed
- 2:05 - 2:30 Patterns of Genetic Variation in Native Grasses: Implications for Restoration.  
 Eric Knapp, Agronomy Department, University of California, Davis
- 2:30 - 2:55 Native Grass Ecotypes: What They Can Tell Us About the Whole Environment  
 Craig Dremann, Redwood City Seed Company
- 3:00 - 4:00 Audience Discussion on the Above Topic
- 4:00 Adjourn

For further information on the meeting, or for information on early registration, contact the California Native Grass Association or Dan Strait ((916) 979-2085.

**S&S SEEDS**

Specializing in top quality seeds, site-specific custom collecting, and an extensive inventory for fast delivery.

**SEED SPECIES**

Over 900 species available in stock:

- ♦ Wildflowers
- ♦ Native Plants
- ♦ Drought-Tolerant Plants
- ♦ Reclamation Grasses
- ♦ Ground Covers
- ♦ Seed Mixes
- ♦ Erosion Control
- ♦ Revegetation

**EROSION CONTROL PRODUCTS**

- ♦ Ecology Controls M-Binder
- ♦ DSS-40 Acrylic Polymer
- ♦ Soil Guard™ Bonded Fiber Matrix

Call or Fax for Prices and Availability

P.O. BOX 1275  
 CARPINTERIA, CA 93014-1275  
 PHONE: 805-684-0436  
 FAX: 805-684-2798

*Melica imperfecta*



# President's Address

Mark Stromberg

As we head into the summer dormant season, CNGA is also seeing some major changes. Your board has been very active in reducing the costs of operating CNGA. Much of the work formerly done by professional office staff will now be done by our board members. We will continue to support our basic mission of promotion, development, and restoration. One of our most important tasks is production of this publication, *Grasslands*. We welcome contributions and are actively offering the pages of this publication to promote the use of native grasses and share our knowledge of how to select and use native grasses in many ways. Our editorial review of articles submitted to *Grasslands* is now underway with help from Andy Dyer and Kitren Weis. We have updated and computerized the membership list. Our board is almost all linked by e-mail and we urge you to check out our home page (<http://www.mbay.net/~cnga/>); we thank Monterey Bay Internet for the donation of 50Mb for that page. If any of you have contributions you would like to see on that space, please let me know. I have had many contacts in the last six months due to that page. If you would send me your e-mail addresses, and areas of expertise, I would be pleased to add you to the index list of CNGA members with e-mail.

Our programs of special events will continue to depend on our individual volunteer efforts. I would like to thank the group of thirty who attended the 1996 Field Day in Carmel Valley. Paul Kephart and the Rana Creek Ranch put on a wonderful lunch and demonstration tour. We really appreciate the donation of the delicious barbecue lunch spread by Rana Creek Ranch. Later that day, our members at Rancho San Carlos and Pebble Beach Company showed us some new uses of native grasses-turf trials. Work over the last few years by Joe Dorrell-Canepa and Steve Dorrell at Pebble Beach Company is providing leadership example of the use of native grasses in a golf setting. With the US Open at Pebble Beach in a few years, the dune restoration and extensive use of native grasses will be highlighted. We expect Steve and Joey to be contributing their knowledge and experiences to articles in *Grasslands* in the next year.

By the time you read this, the Grass Identification Workshop at Walker Creek Ranch will have been brought off by Tom Griggs. We had at least twenty people signed up. This is a good turn-out as an earlier grass workshop by the Jepson Herbarium was also well attended.

Our annual meeting in Monterey is our final event of the year, and that is well underway by Dan Strait. We plan to honor our elders, specifically inviting those who made the early contributions to appreciation and use of our native grasses in California. We hope you can all attend. Make a short vacation of it- there is much to see in Monterey, including the new wing of the Monterey Bay Aquarium. If you want to see a wonderful display of native grasses, visit the south shore of Point Lobos State Park. There is something there for kids of all ages and it is almost free.

Thanks to all the board and members of CNGA who have helped so much this year. And for those of you who want to help build our network of expertise in native grasses, please get in touch with any of the current board. See you in Monterey!



## PACIFIC OPENSOURCE, INC. & NORTH COAST NATIVE NURSERY

- Environmental assessment and monitoring
- Mitigation and restoration plans
- Revegetation installation contracting
- Habitat restoration and management
- Extensive inventory of native California species
- Contract collection and propagation

**707-769-1213**

P.O. BOX 744, PETALUMA, CA 94953  
FAX 707-769-1230



A Division of  
Stewart Family Farms

**California's Number One  
producer of native grass seeds.**

Meadow Barley • Blue Wildrye  
Purple Needlegrass • California Brome  
California Red Fescue • Zorro Fescue  
Molate Fescue

pasture improvement • soil stabilization and  
erosion control • cover crops • ornamental  
ground covers • wildfire reseeding  
wildlife habitat restoration

P.O. Box 455  
Rio Vista, CA 94571  
(916) 775-1646

volume 6, number 2



# Valley Transplant Company

23000 Bruella Road  
Acampo, CA 95220  
209-368-6093

## Specializing in native grass transplant

- \* Inexpensive plugs—cell size 1 1/4" x 1 1/4" x 3"
- \* Price dependent on quantity and grass species
- \* Must receive seed/order for propagation by Aug. 1 for delivery in October-November
- \* Fall propagation for mid winter/early spring planting
- \* Custom seed collecting services available

### Price per species/accession

- \$.05 each for 20,000+
- \$.07 each for 10,000-20,000
- \$.10 each for 5000-10,000
- \$.12 each for 5000 or less

**Remember:** Collect seed now for propagation in fall. Plan for plugs to be ready in 6-8 weeks after planting in greenhouses. Warm season grasses must be started by May 1st.

*California Native Grass Seeds  
Wildflower & Erosion Control Blends  
Hydroseeding & Reclamation Mixes  
Consultation*

*Pacific  
Coast Seed  
INC.*

Wholesale Seed to the Restoration  
and Reclamation Industries

6144-A Industrial Way - Livermore, CA 94550  
(510)373-4417 FAX (510)373-6855

volume 6, number 2

Grasslands



## Specializing in the production of California native grass seed and the establishment of native grassland ecosystems

Our seed is from bioregional sites in the North Central Valley, Valley Foothills, and Central Inner Coast Range. Single species and seed mixes are available for many landscaping and restoration needs. Our seed is grown, cleaned, and tested to provide a quality product of known origin. We also provide custom growing and consulting.

For more information and a catalogue, please call, fax, or write:



Hedgerow Farms, 21740 County Rd. 88  
Winters, CA 95694  
Ph. (916) 662-4570, Fax (916) 668-8369.



A division of the Redwood City Seed Co.,  
Box 609, Redwood City, Ca. 94064

Craig C. Dremann (415) 325-7333

**"HOW LOCAL IS LOCAL?"**

The World's only Ecotype survey company,  
specializing in native grasses! Send a list of  
species and map of survey area for quote.

Native Grass Bare-root plants grown from  
your locally collected seed, as low as 20¢.

Call for a list of species or see us on the  
internet at:

<http://www.batnet.com/rwc-seed/native.grass.html>

**DIFFICULT SITES?** Having trouble getting  
vegetation established? Send photos of site,  
species list of surrounding area, acreage,  
reclamation plan (if any), and one quart  
sample of soil for free evaluation.



*1996 Board of Directors*

**Officers**

**President**

Dr. Mark Stromberg  
Mgr. UC Hastings Natural  
History Reservation  
38601 E. Carmel Valley Rd.  
Carmel Valley, CA 93924  
(408) 659-2664 (O)  
(408) 659-7208 (Fax)  
(408) 659-5307 (H)  
stromber@violet.ucberk.edu

**President-elect**

Dr. John Menke  
11263 North Hwy 3  
Fort Jones, CA 96032  
(916) 468-5351 (O)  
(916) 468-5341 (H)

**Past President**

Dan Strait  
US Fish & Wildlife Service  
2233 Watt Ave., Suite 375  
Sacramento, CA 95825-0509  
(916) 979-2085 (O)  
(916) 979-2092 (FAX)  
daniel\_strait@mail.fws.gov

**Secretary**

Phil Hogan  
USDA Natural Res.  
Conservation Service  
221 W. Court St., Ste 5  
Woodland, CA 95695  
(916) 662-2037 (O)  
(916) 662-4876 (FAX)

**Treasurer**

Andrew Dyer  
Agronomy & Range Sci  
University of California  
Davis, CA 95616-8515  
(916) 752-1701 (O)  
(916) 752-4361 (FAX)  
ardyer@ucdavis.edu

**Members at Large**

Tony Norris (1995-1996)  
3765 Clara Drive  
Napa, CA 94558  
(707) 648-4481 (O)  
(707) 255-5777 (FAX)

David Dyer, Mgr. (1995-1996)  
USDA Natural Resources  
Conservation Service  
P.O. Box 68  
Lockeford, CA 95237  
(209) 727-531 9/3205 (O)  
(209) 727-5923 (FAX)  
(209) 727-3205 (H)

Rachel Long (1995-1996)  
UC Cooperabve Extension  
70 Cottonwood Street  
Woodland, CA 95695  
(916) 666-8143 (O)  
(916) 666-8736 (FAX)

John Anderson (1996-1997)  
21740 County Road 88  
Winters, CA 95694  
(916) 662-4570 (H)  
(916) 668-8369 (FAX)

Glen Holstein (1996-1997)  
1509 Pacific Drive  
Davis, CA 95616-1330  
(916) 758-6787

Sally Walter (1996-1997)  
551 Jean St. #301  
Oakland, CA 94610  
(510) 286-6226 (O)  
(510) 654-9708 (H)

**CNGA Mailing Address**

CNGA  
P.O. Box 72405  
Davis, CA 95617

**Lawyer**

Zad Leavy  
3785 Via Nona Marie, Ste 309  
Carmel, CA 93923  
(408) 624-6060 (O)  
(408) 625-1250 (FAX)  
Katherine Petty, Secretary

**Grasslands Managing Editor**

Kitren Weis  
19871 County Road 79  
Capay, CA 95607  
(916) 754-4096 (O)  
(916) 796-2180 (H)  
kgweis@ucdavis.edu

**Grasslands Science Editor**

Andrew Dyer  
Agronomy & Range Sci  
University of California  
Davis, CA 95616-8515  
(916) 752-1701 (O)  
(916) 752-4361 (FAX)  
ardyer@ucdavis.edu

**Committee Chairs**

**Research and Development**

Tom Griggs  
The Nature Conservancy  
1658 Inghram Road  
Corning, CA 96021  
(916) 826-0947 (O)  
(916) 824-4862 (H)

**Seed Production/Marketing**

David Dyer  
USDA Natural Resources  
Conservation Service  
P.O. Box 68  
Lockeford, CA 95237  
(209) 727-5319 (O)  
(209) 727-5923 (FAX)

**Ecosystem Restoration**

Ray Griffiths  
Acom Environmental Consult.  
P.O. Box 617  
Georgetown, CA 95634  
(916) 333-1299

**Roadside Management**

John Anderson  
21740 County Road 88  
Winters, CA 95694  
(916) 662-4570

**Public Information/Education**

Carolyn Shoulders  
1182 Ocean Avenue  
Oakland, CA 94608-1142  
(510) 655-7853 (H)

**Urban Use and Landscaping--Vacant**

**CNGA Corporate Members**  
Jones & Stokes Associates

**CNGA Life Members**

John Anderson  
Polly Anderson  
Bob Battagin  
Sally Casey  
Charlice Danielsen  
Jim Dekloe  
Bob Delzell  
Jim Eagan  
David Gilpin  
Charlotte Glenn  
Paul Kephart  
Rod MacDonald  
Eugene Majerowicz  
Warren Roberts  
Vic Schaff  
Jacob Sigg  
Scott Stewart  
David Yam

**Join CNGA**

Date \_\_\_\_\_ Name \_\_\_\_\_  
 Title \_\_\_\_\_ Organization \_\_\_\_\_  
 Address \_\_\_\_\_  
 City, State, Zip \_\_\_\_\_  
 Phone/FAX \_\_\_\_\_

*Membership Satus*

Regular	\$35/year
Student	\$20/year (include school, grad. yr.)
Retired	\$20/year
Life	\$350
Corporate	\$500/year
Associate	\$100/year

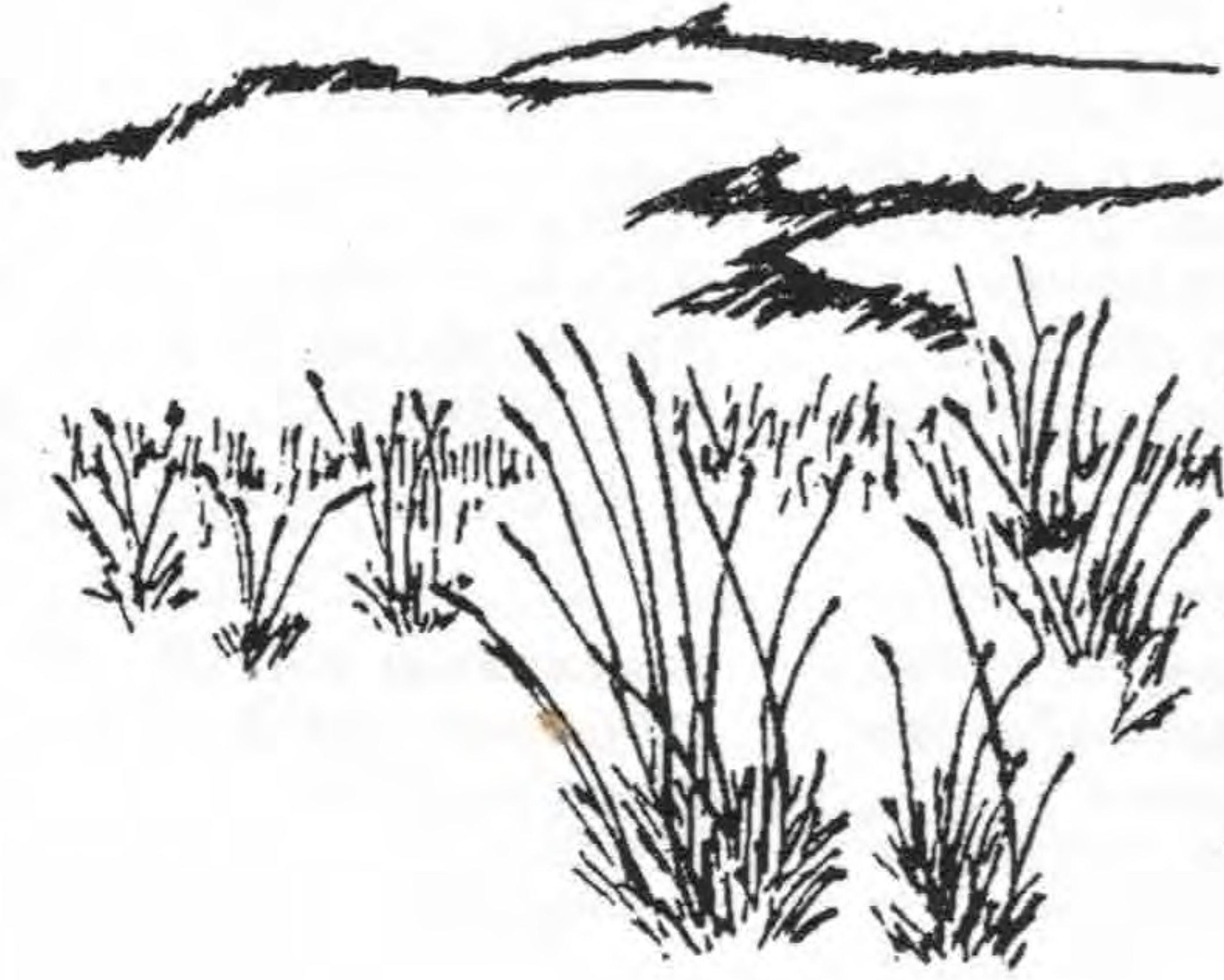
*Benefits:* Regular, Student, Retired, or a business on a Regular Membership--1 person at member rates at functions; Family, Commercial or Associate--all members of group at member rates.  
*Donations:* In any category designed (see committees), to support CNGA in its efforts to Develop, Promote, and Restore, I am enclosing a donation of \$\_\_\_\_\_ for \_\_\_\_\_

Donations are tax deductible to the extent allowed under federal and state law.

Dues are for a twelve--month period dating from receipt of payment.  
 Detach and mail to:

California Native Grass Association  
 P.O. Box 72405  
 Davis, CA 95617





*DEVELOP  
PROMOTE  
RESTORE*

**California Native Grass Association**  
P.O. Box 72405  
Davis, CA 95617



**Non-Profit Org.**  
U.S. Postage  
**PAID**  
Permit No. 19  
Dixon, CA

**ADDRESS CORRECTION REQUESTED**